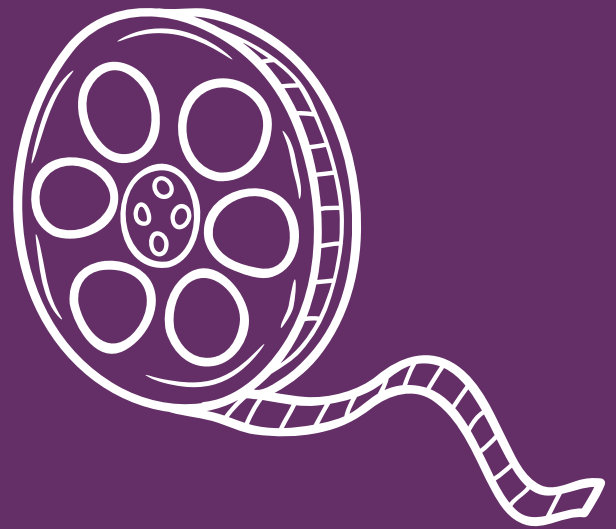
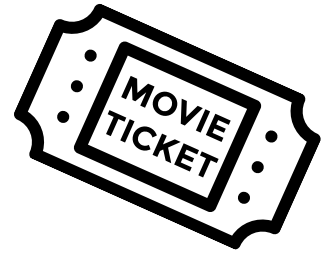
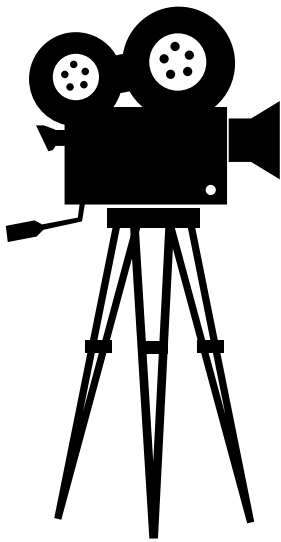


BOOK VERSUS MOVIE *Analysis*





BOOK VERSUS MOVIE ANALYSIS

When a screenwriter and director work to adapt a book into a movie, they must make decisions about what aspects of the story to keep and what to omit. Time constraints do not allow for everything to be included, and switching from a printed medium to a visual one makes it difficult to include some elements. In order to find a balance between remaining true to the book and creating an engaging cinematic experience, the film adaptation needs to capture the *essence* of the story rather than recreate the book scene by scene.

In this analysis, you will compare the movie to the book. You will analyze what was omitted and what was included as you determine if the movie was a *true and accurate representation* of the book. You will then write a review for both the book and the movie, deciding which version you prefer.

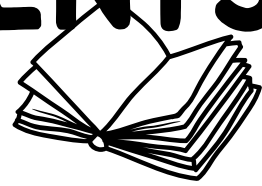
I hope this study helps you organize your thoughts and that it prompts great discussion with your family.

Trish



Weird Unsocialized
Homeschoolers

STORY ELEMENTS



Complete each part of the story elements using the information from the book.

<p>Who are the characters?</p>	<p>What is the setting?</p>
<p>What is the problem ?</p>	<p>How was the problem solved?</p>

MOVIE ELEMENTS



Complete each part of the story elements using the information from the movie.
Note if it was changed from the book.

Who are the characters?

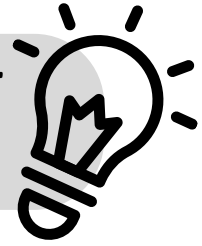
What is the setting?

What is the problem?

How was the problem solved?

CENTRAL MESSAGE

THE CENTRAL MESSAGE IS A STORY'S "BIG IDEA"
OR WHAT THE AUTHOR WANTS YOU TO LEARN.



WHAT IS THE CENTRAL MESSAGE OF THE STORY? DID THE
BOOK AND MOVIE HAVE THE SAME MESSAGE?

PROVIDE EVIDENCE

PROVIDE EVIDENCE

BOOK THEME

**THE THEME IS THE MAIN MESSAGE, MORAL, OR LIFE LESSON
THE AUTHOR WANTS YOU TO LEARN FROM THE STORY.**



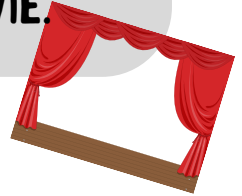
Title of the book:

<p>What is the problem in the story?</p>	<p>What do the characters learn?</p>	<p>How do the characters grow or change?</p>
--	--	--

<p>What is the theme?</p>

MOVIE THEME

**THE THEME IS THE MAIN MESSAGE, MORAL, OR LIFE LESSON
THE DIRECTOR WANTS YOU TO LEARN FROM THE MOVIE.**



Title of the movie:

<p>What is the problem in the movie?</p>	<p>What do the characters learn?</p>	<p>How do the characters grow or change?</p>
--	--------------------------------------	--

What is the movie's theme? Was it changed from the book?

AUTHOR'S PURPOSE



PERSUADE

The author writes to convince you of/ change your mind about a topic.

INFORM

The author writes to give you information about a topic.

ENTERTAIN

The author writes a story for the reader to enjoy!

Title of book:

What is the author's purpose?

Provide evidence from the book to support your answer.

DIRECTOR'S PURPOSE

PERSUADE

The director aims to convince you of/change your mind about a topic.

INFORM

The director works to give you information about a topic.

ENTERTAIN

The director creates a film for viewers to enjoy!

Title of movie:

What is the director's purpose?

Provide evidence from the movie to support your answer.

CAUSE AND EFFECT

CAUSE: THE REASON WHY SOMETHING HAPPENS

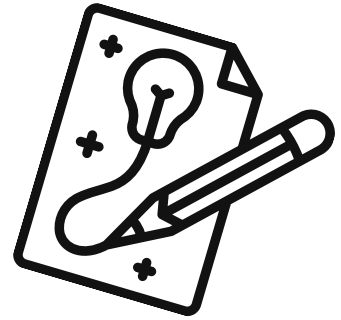
EFFECT: THE THING THAT TAKES PLACE



SHARE SOME DIFFERENCES IN CAUSE AND EFFECT BETWEEN THE BOOK AND THE MOVIE.

Cause	Effect
Cause	Effect
Cause	Effect

MAIN IDEA



Topic:

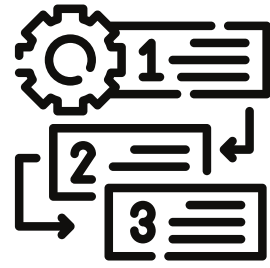
What is the main idea of the story? Did the movie change it?

Provide supporting detail	Provide supporting detail	Provide supporting detail
---------------------------	---------------------------	---------------------------

Using the information above, write a summary of the main idea.
If the movie changed it, write about the one you preferred.

SEQUENCE

ORDER OF EVENTS



In the boxes below, write the events of the story in order. Note if the event was left out of the movie.

BOOK	MOVIE

CHARACTER TRAITS

Write 3 traits of the character and provide evidence for each trait to support your answer. Were any of these character traits (or supporting evidence) left out of the movie? Did it change the character's depth?

Character's Name:



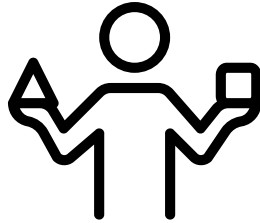
Trait	Trait	Trait



Evidence	Evidence	Evidence

COMPARE AND CONTRAST

Write the differences and similarities between the book and movie.



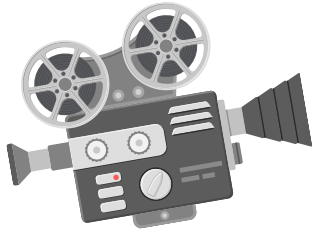
BOOK

MOVIE

Differences

Similarities

Differences



FILM ADAPTATION ANALYSIS

After viewing the film version of the assigned book, take notes about the categories below. In the "OVERALL ASSESSMENT" box you will give a grade of A, B, C, D, or F.

In the "CRITIQUE" box, you will comment on something that is not well-executed in the film version or does not capture the essence of the book. In the last box, share what you believe is the most successful interpretation or representation of the book.

Remember, a film does not have to be exactly like a book to represent the story well.

SETTINGS

OVERALL ASSESSMENT

CRITIQUE



HOW DID THE SETTING OF THE MOVIE DIFFER FROM WHAT YOU IMAGINED WHEN YOU READ THE BOOK? WHICH WAS BETTER?

PLOT/STORY STRUCTURE

OVERALL ASSESSMENT

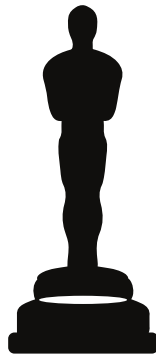


CRITIQUE

HOW DID THE PLOT OF THE MOVIE VERSION DIFFER FROM WHAT YOU IMAGINED WHILE READING THE BOOK? WHICH WAS BETTER?

CHARACTERS/CASTING

OVERALL ASSESSMENT



CRITIQUE

HOW DID THE CHARACTERS IN THE MOVIE DIFFER FROM THE CHARACTERS YOU IMAGINED WHILE READING THE BOOK? WHICH VERSION WAS BETTER?

CONFLICTS/ACTOR DYNAMICS

OVERALL ASSESSMENT



CRITIQUE

HOW DID THE CONFLICTS IN THE MOVIE DIFFER FROM WHAT YOU IMAGINED AS YOU READ THE BOOK? WHICH WAS BETTER?

PROPS AS SYMBOLS

OVERALL ASSESSMENT

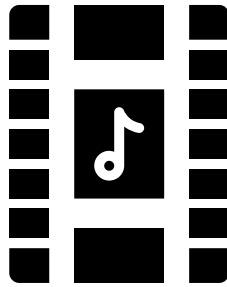


CRITIQUE

HOW DID THE MOVIE'S USE OF PROPS HELP TELL THE STORY? DID IT HELP OR HINDER THE STORY LINE?

SOUNDTRACK CHOICES

OVERALL ASSESSMENT

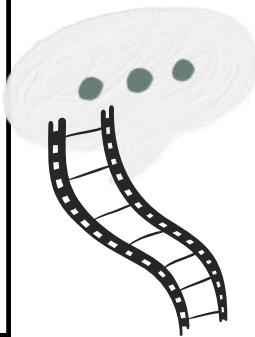


CRITIQUE

HOW DID THE SOUNDTRACK FOR THE MOVIE CHANGE THE WAY YOU IMAGINED THE TEMPO OF THE BOOK? DID IT HELP OR HINDER IT?

THEMES/OVERALL MESSAGES

OVERALL ASSESSMENT



CRITIQUE

HOW DID THE THEME AND MESSAGE OF THE MOVIE DIFFER FROM THE MESSAGE AND OVERALL THEME OF THE BOOK? WHICH WAS BETTER?

